

4.0 Information management process summary

The summary provides a helicopter view of the processes according to ISO 19650-2 (although it should be noted that it does not indicate every possible instance of involvement across the parties).

The following pages show the process in each stage in more detail.

Key:



Activity to be undertaken



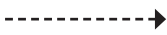
Decision point



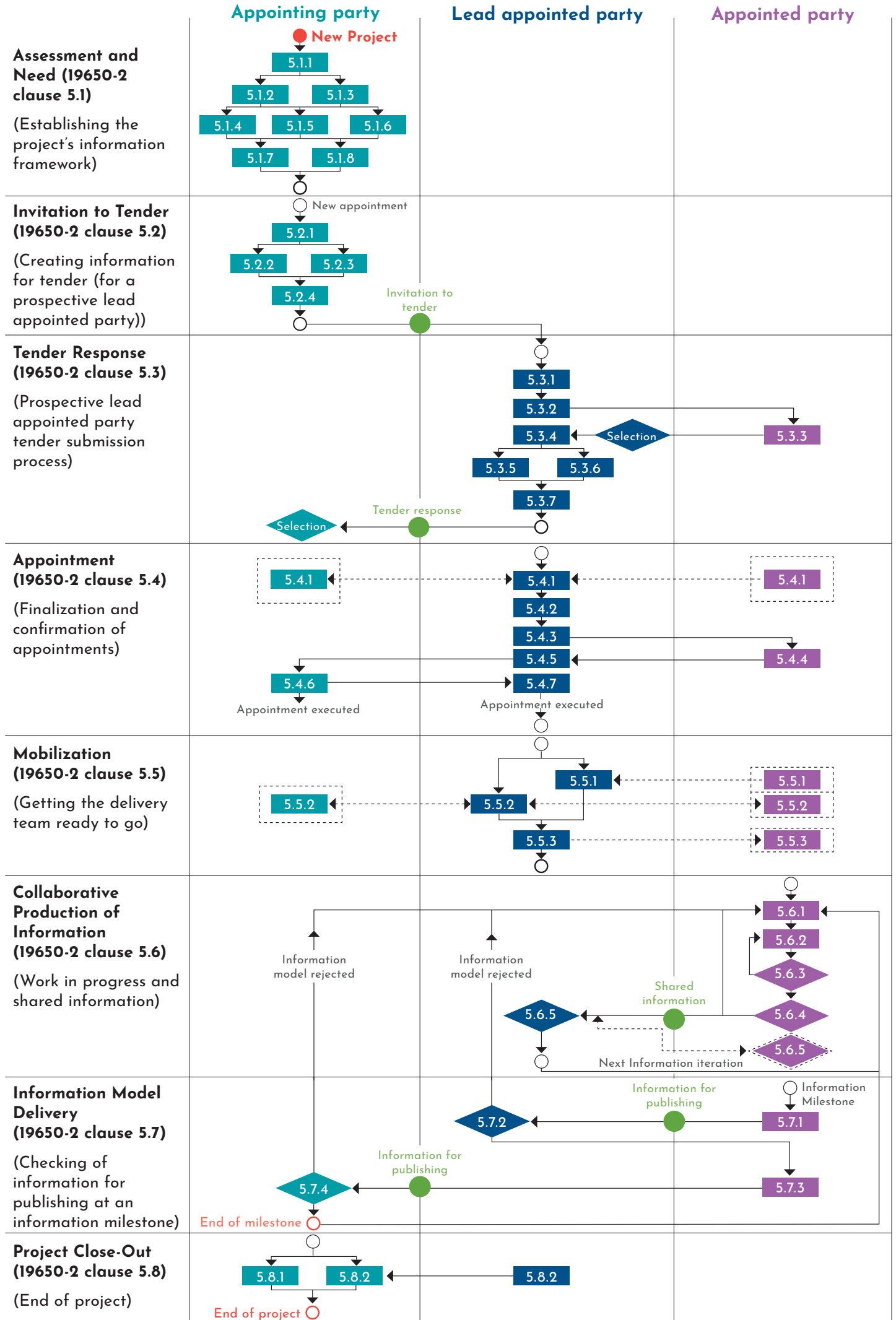
Information exchange



Sequence flow



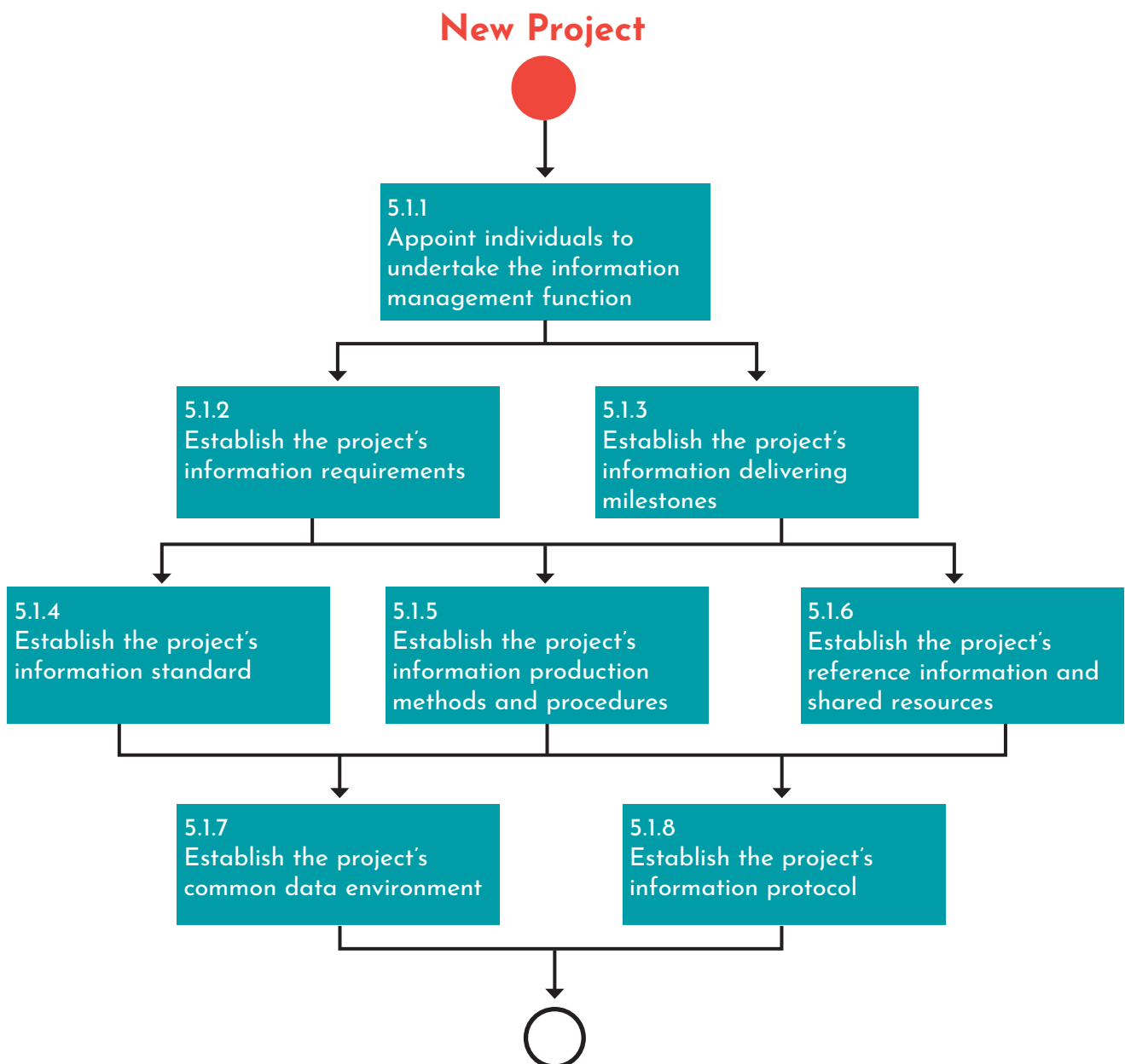
May contribute to or be informed of



Assessment and Need (19650-2 clause 5.1)

(Establishing the project's information framework)

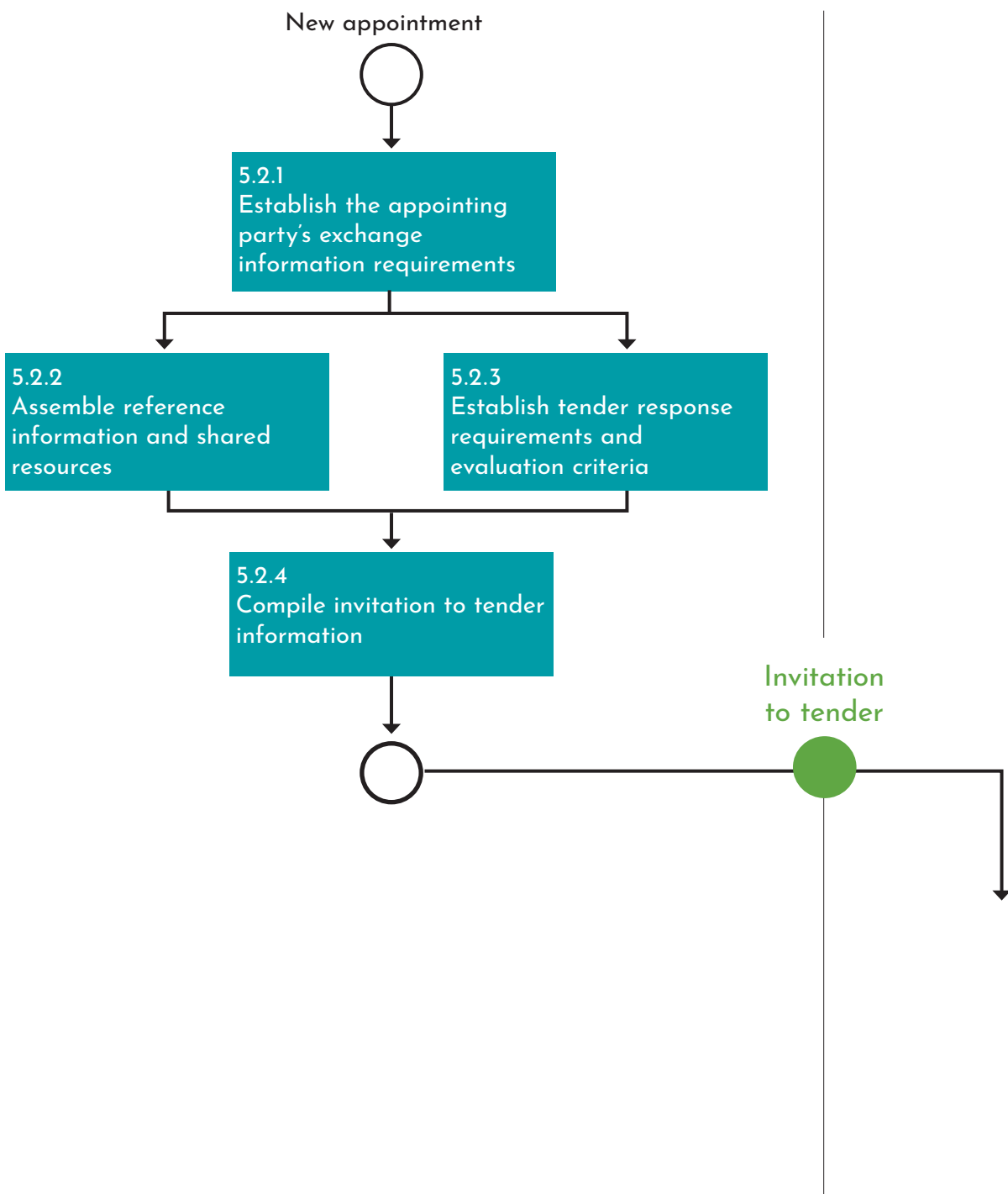
 Appointing party



Invitation to Tender (19650-2 clause 5.2)

(Creating information for tender (for a prospective lead appointed party))

Appointing party



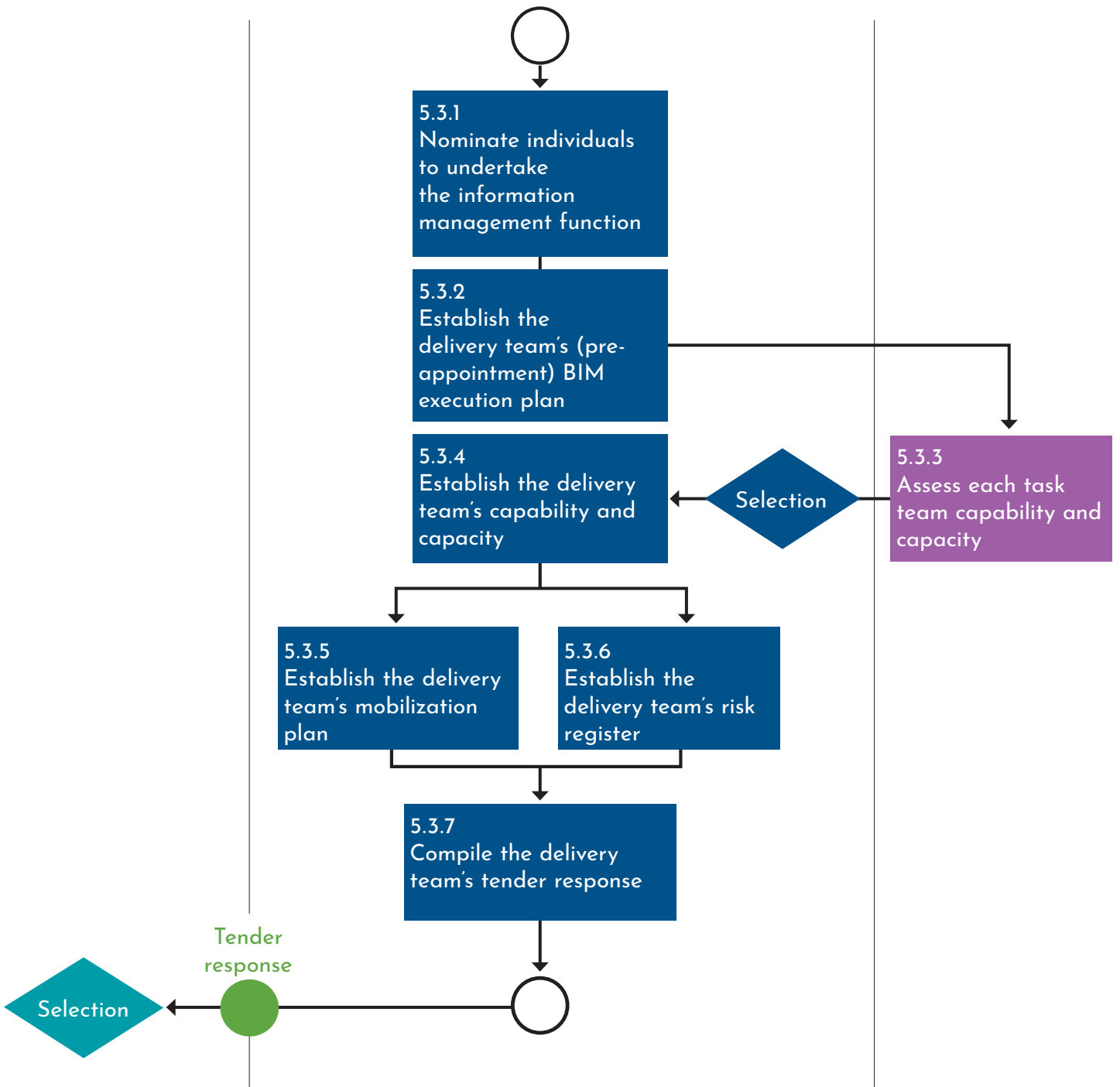
Tender Response (19650-2 clause 5.3)

(Prospective lead appointed party tender submission process)

 Appointing party

 Lead appointed party

 Appointed party



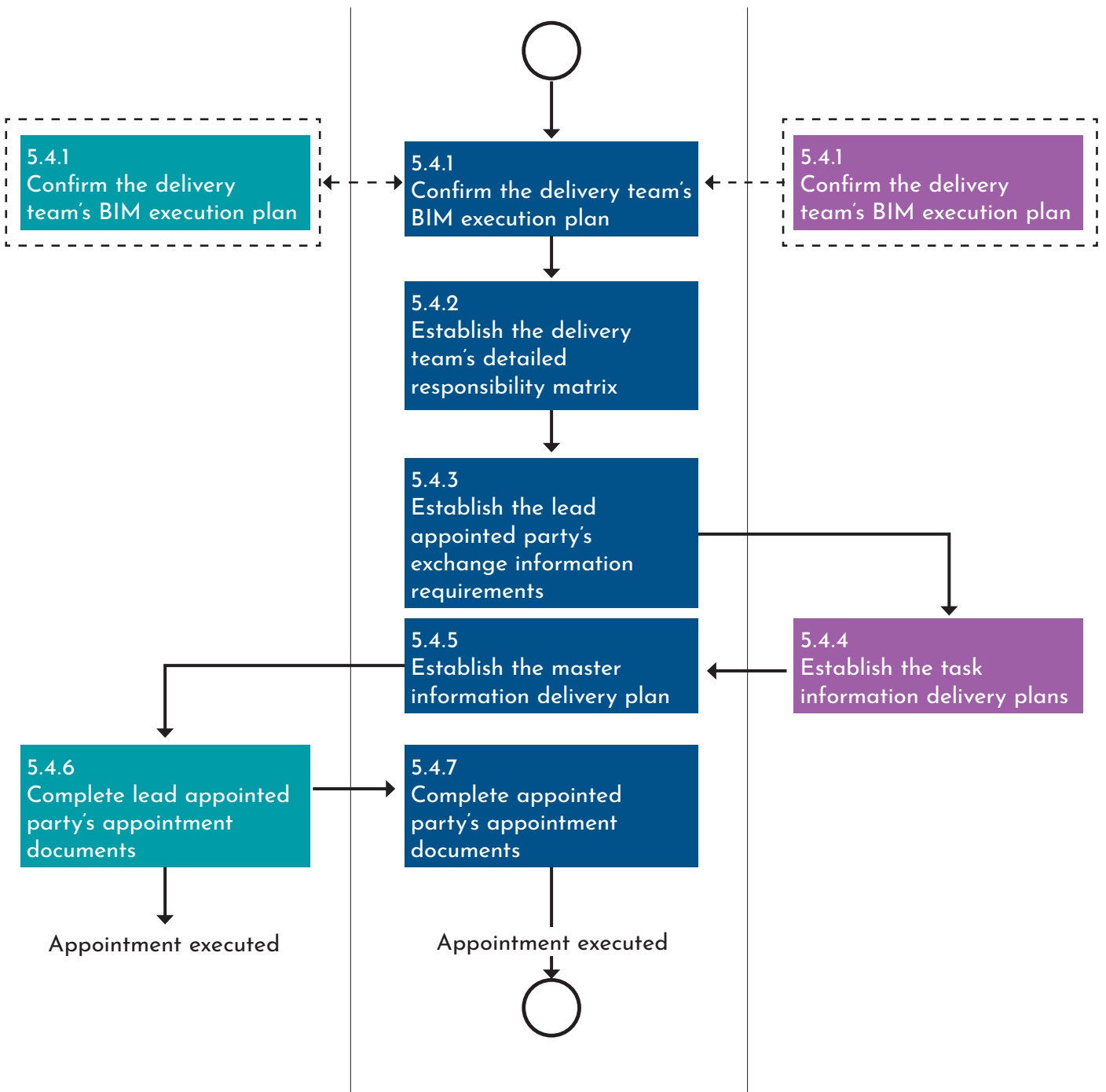
Appointment (19650-2 clause 5.4)

(Finalization and confirmation of appointments)

 Appointing party

 Lead appointed party

 Appointed party



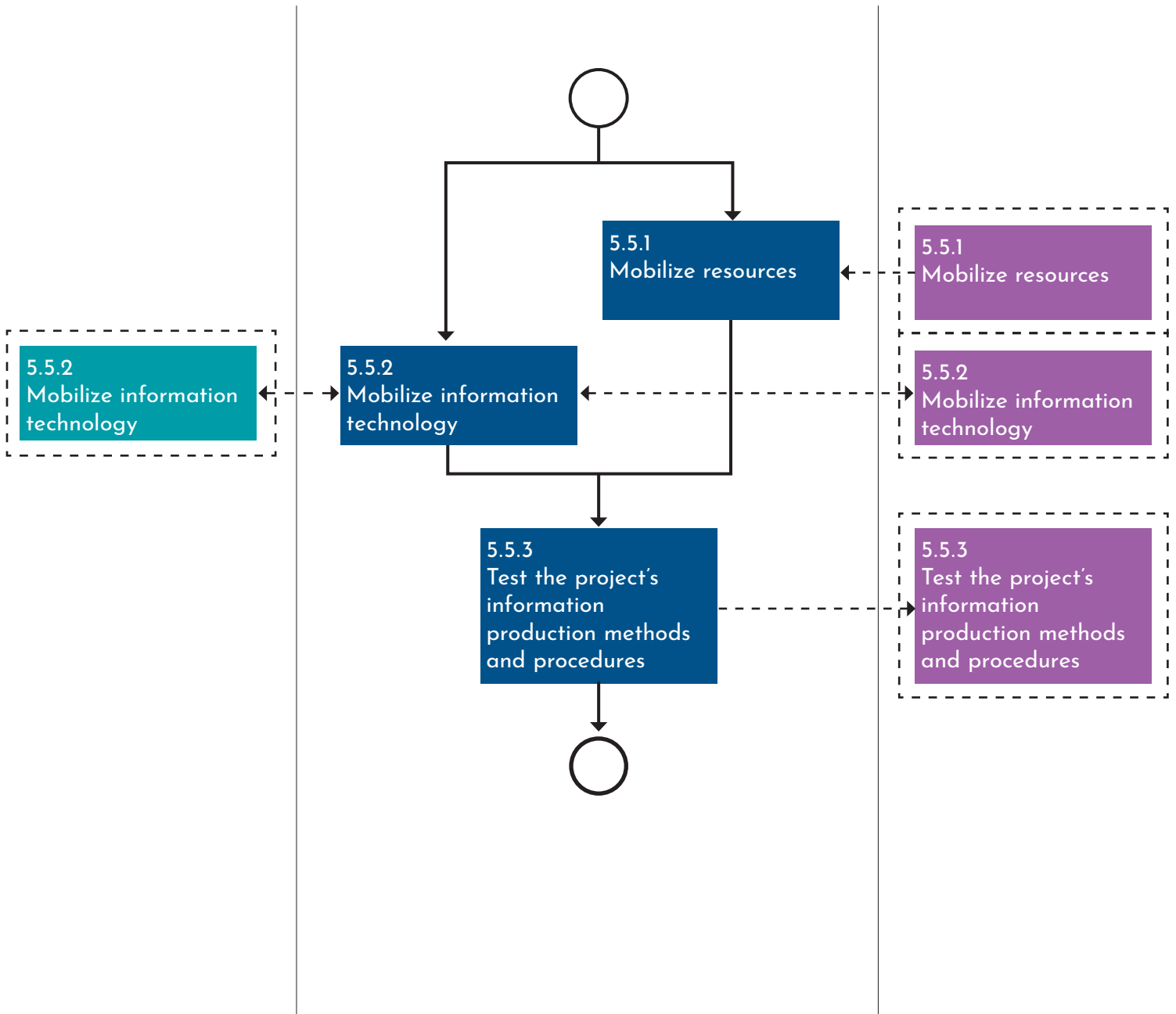
Mobilization (19650-2 clause 5.5)

(Getting the delivery team ready to go)

 Appointing party

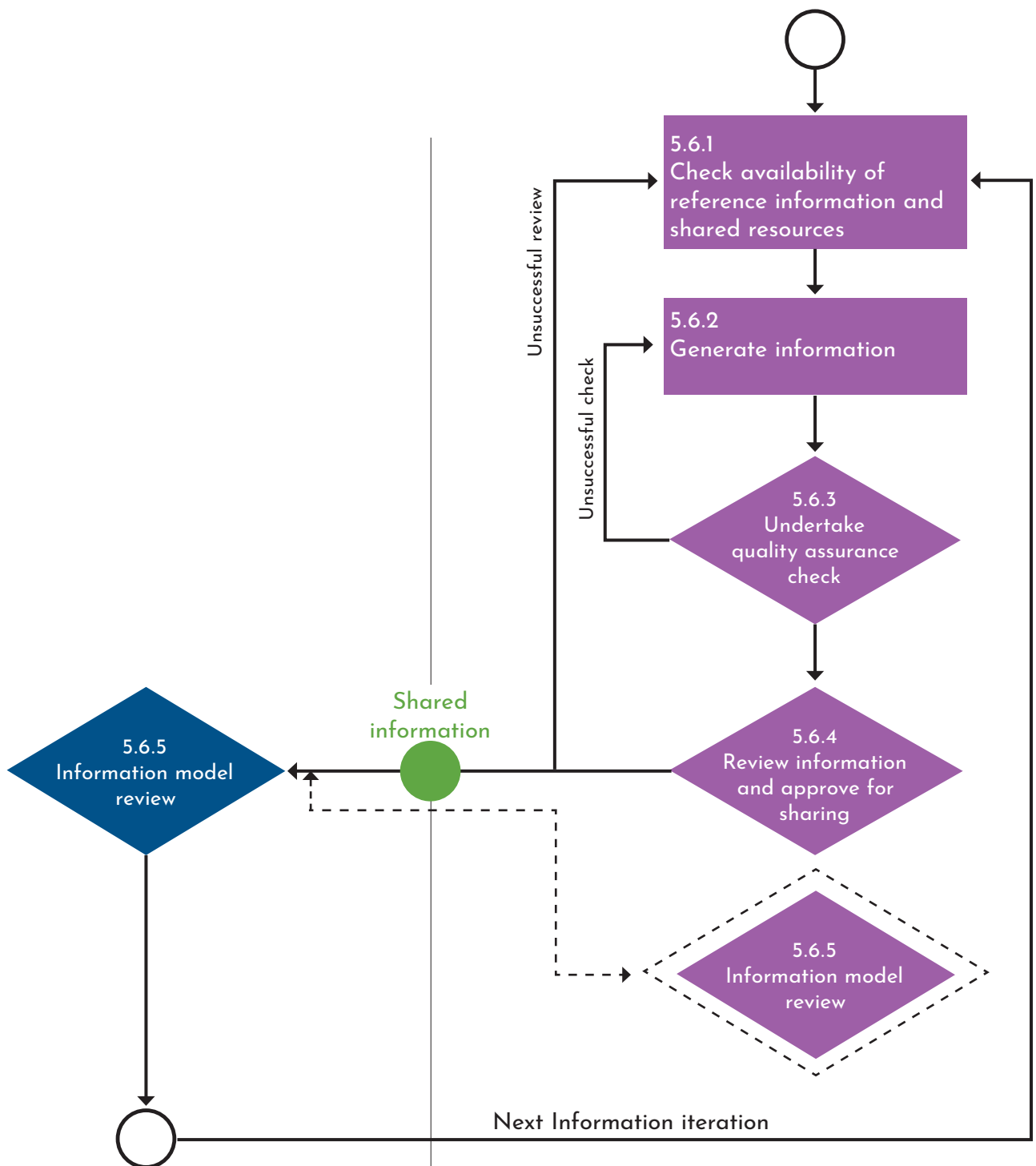
 Lead appointed party

 Appointed party



Collaborative Production of Information (19650-2 clause 5.6)

(Work in progress and shared information)



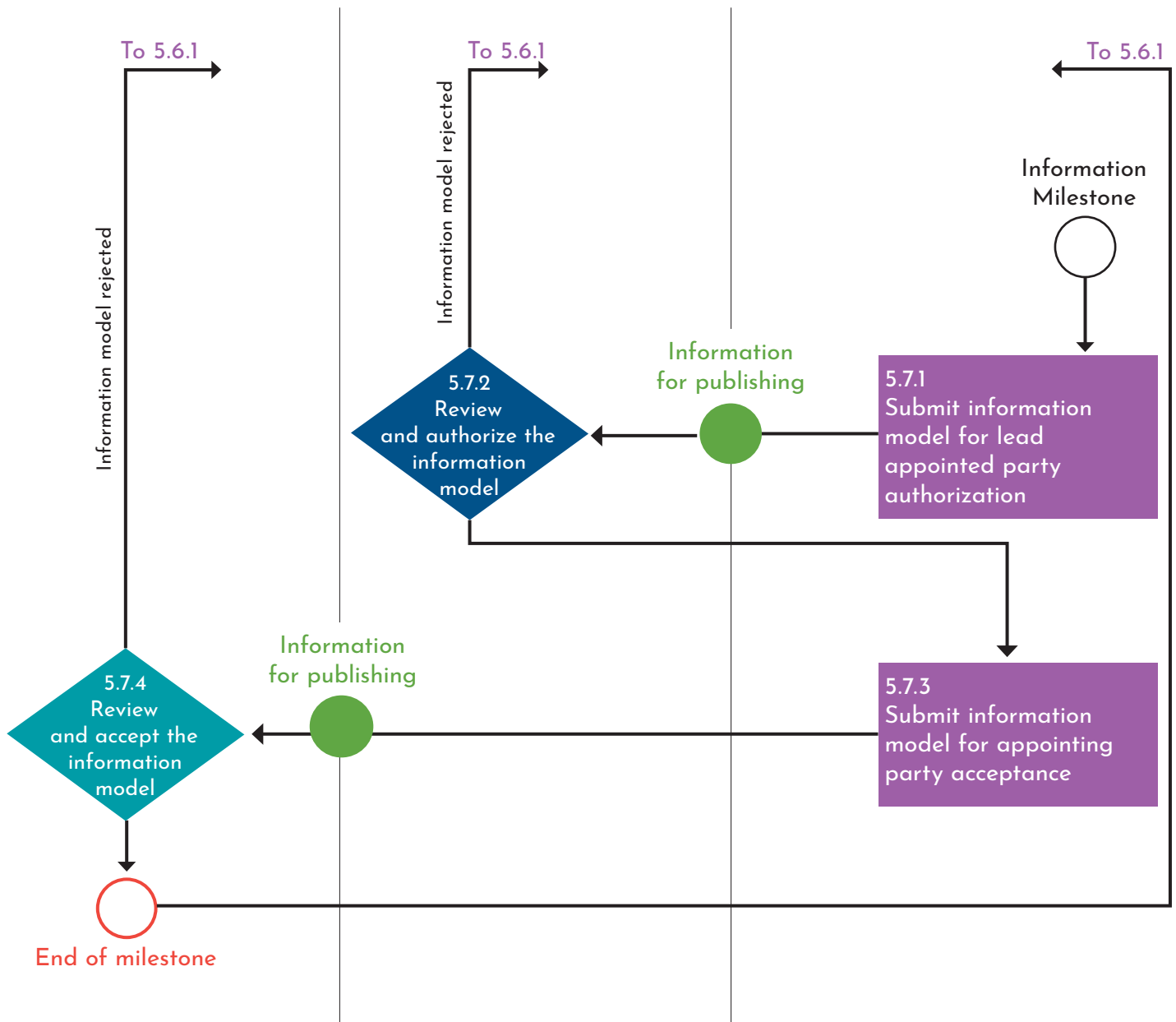
Information Model Delivery (19650-2 clause 5.7)

(Checking of information for publishing at an information milestone)

 Appointing party

 Lead appointed party

 Appointed party

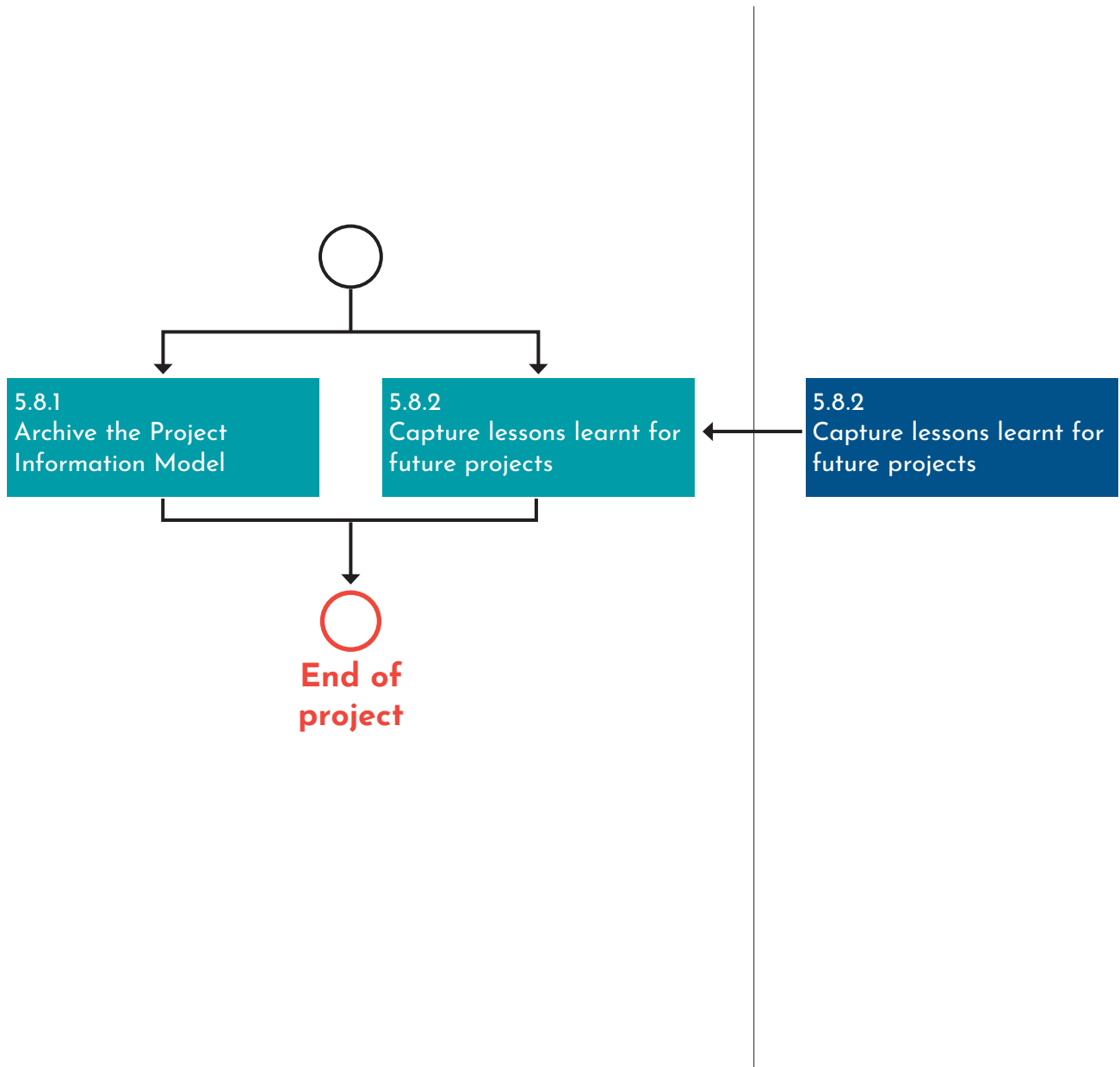


Project Close-Out (19650-2 clause 5.8)

(End of project)

 Appointing party

 Lead appointed party



5.0 Summary

ISO 19650 guidance part 2 has provided an explanation about the parties, teams and activities involved in the processes for project delivery.

It should be referred to by practitioners and those implementing the ISO 19650 series across a project, within an appointment or within an organization.

The sixth edition also provided an introduction to the 2021 National Annex. The next edition will extend this guidance to cover implementation of the 2021 National Annex beyond the assessment and need activities associated with the delivery phase of a project.

Please do let us have your feedback by emailing us at guidancefeedback@ukbimframework.org.

Please also remember that standards within the ISO 19650 series are available at www.bsigroup.com.

Visit www.ukbimframework.org to see how the ISO 19650 standards plus other standards within the UK BIM Framework map to the design, build, operate and integrate process.