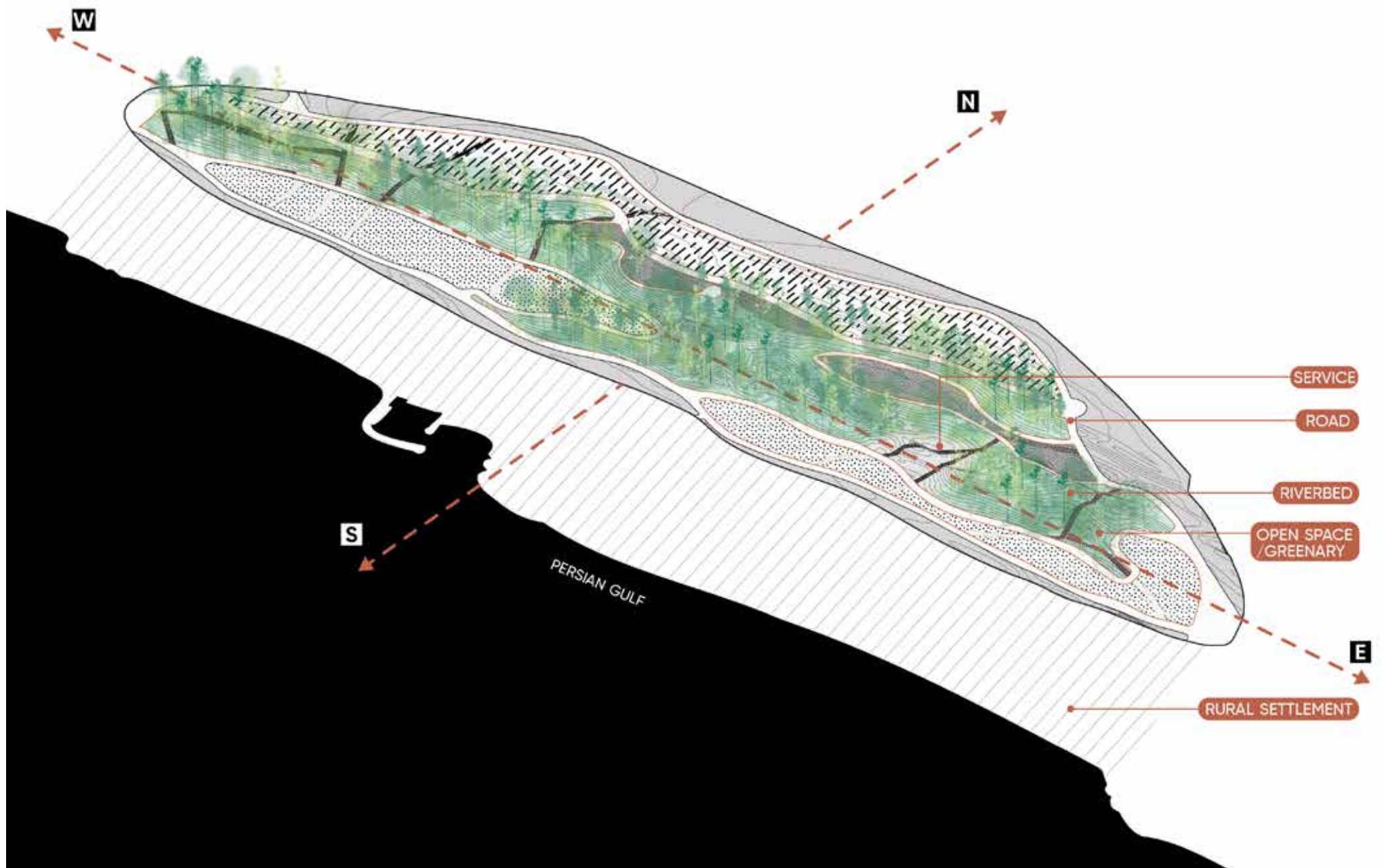


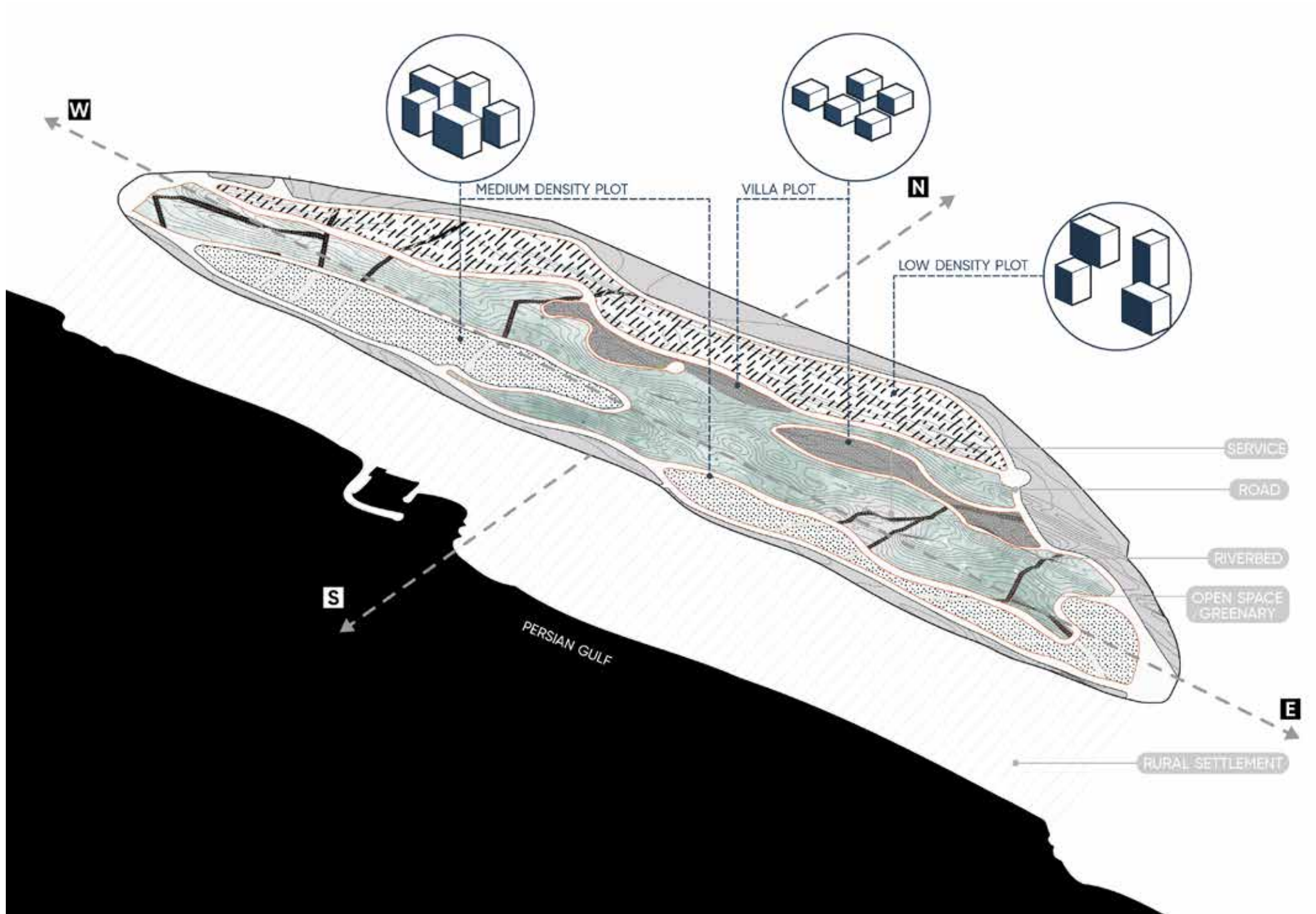
-ARCHITECTURAL-

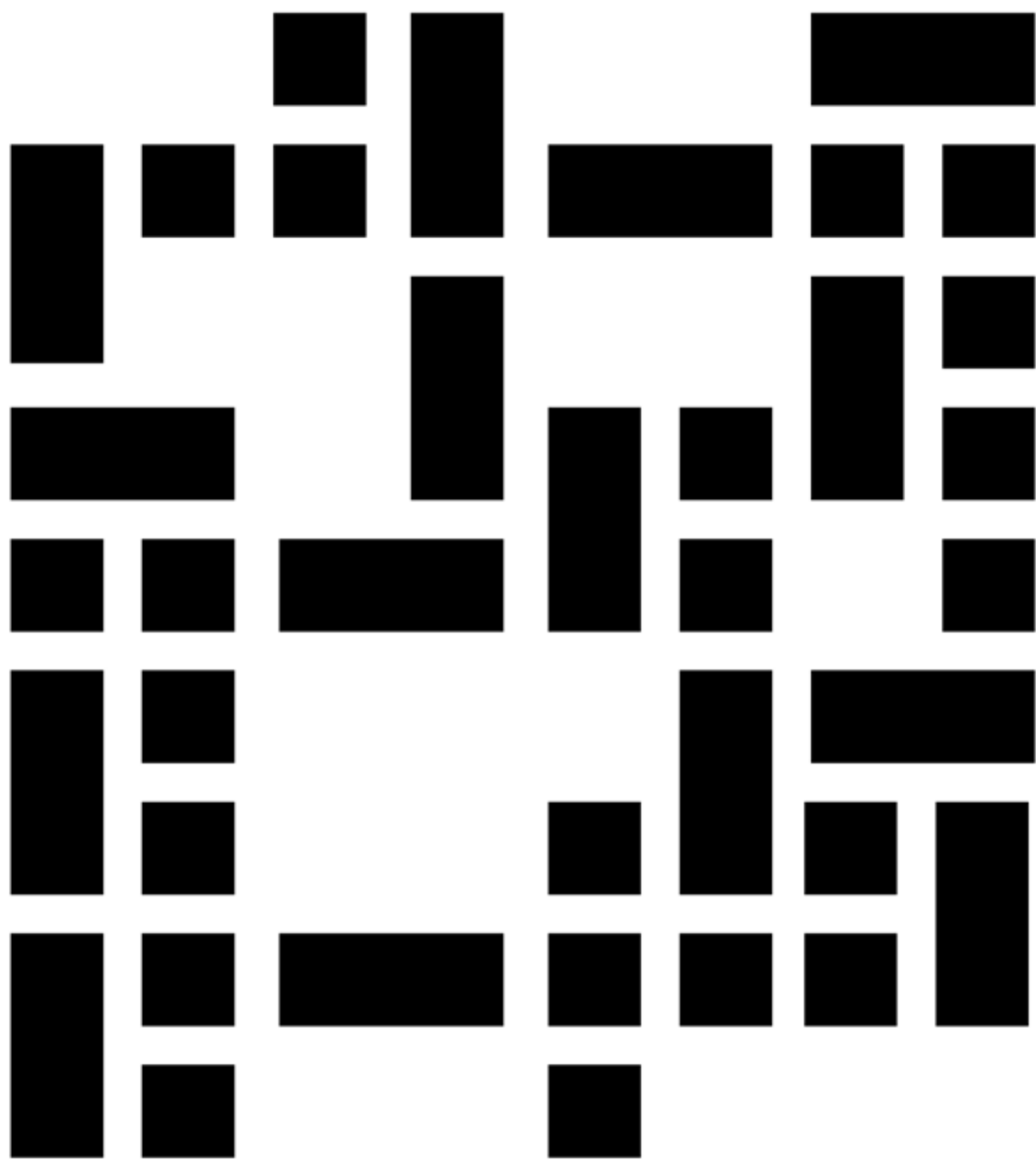
AUTUMN 2025

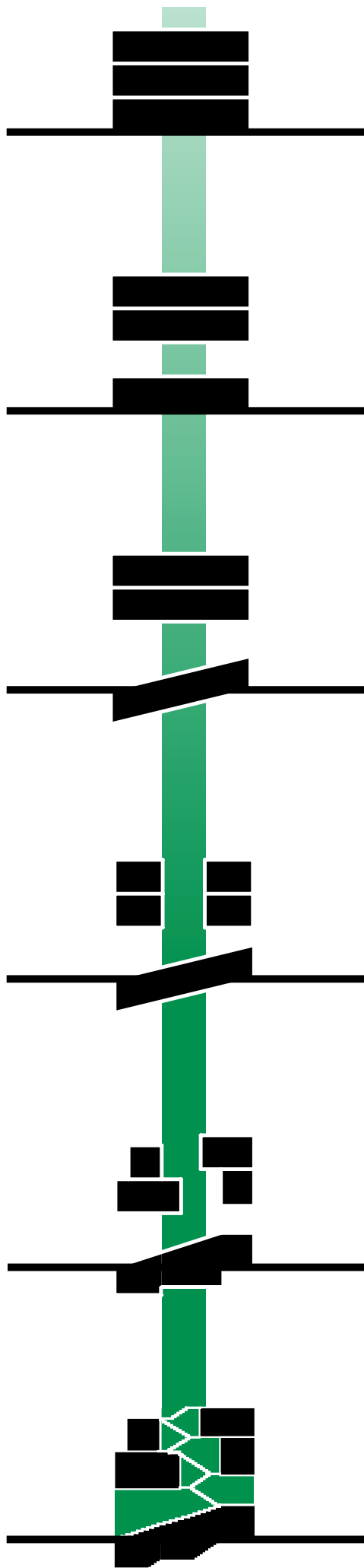


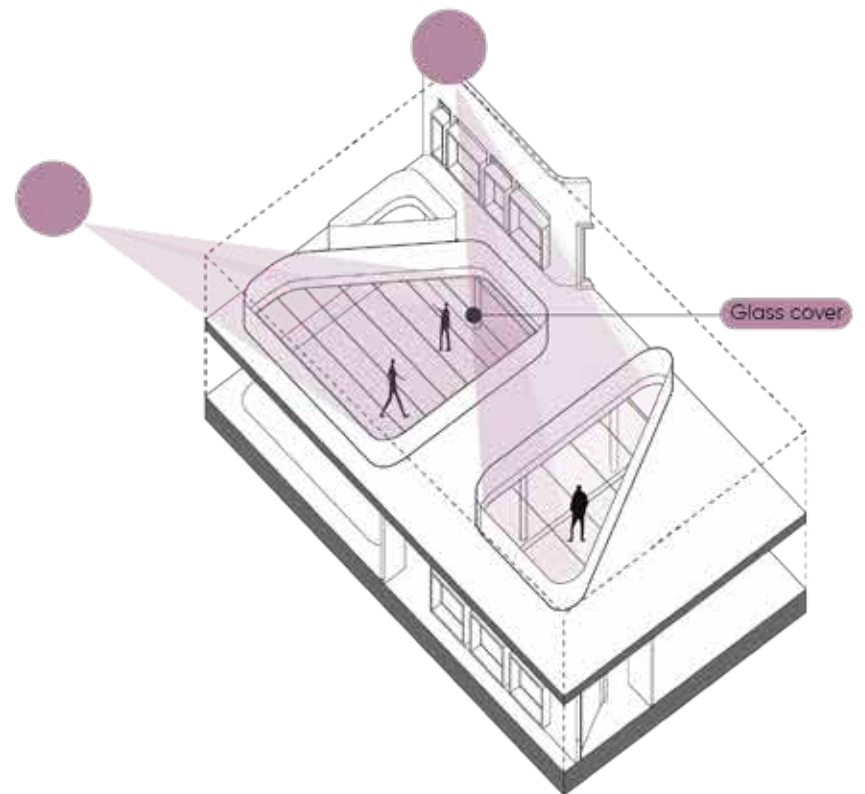
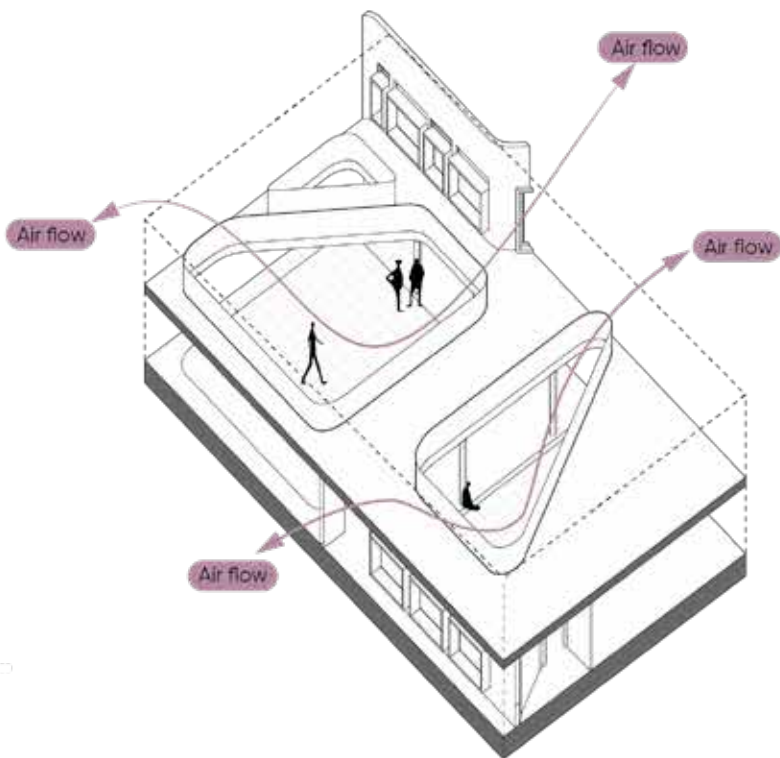
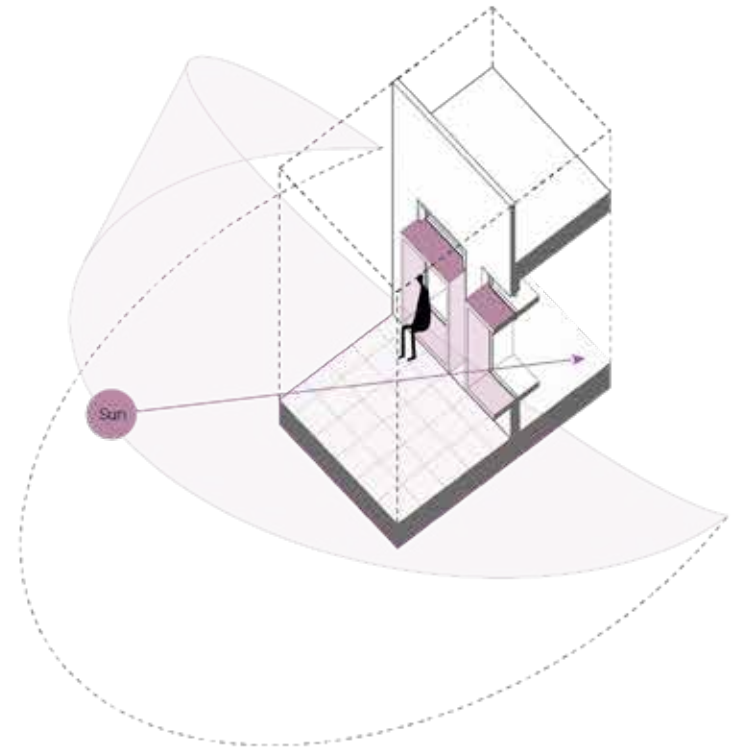
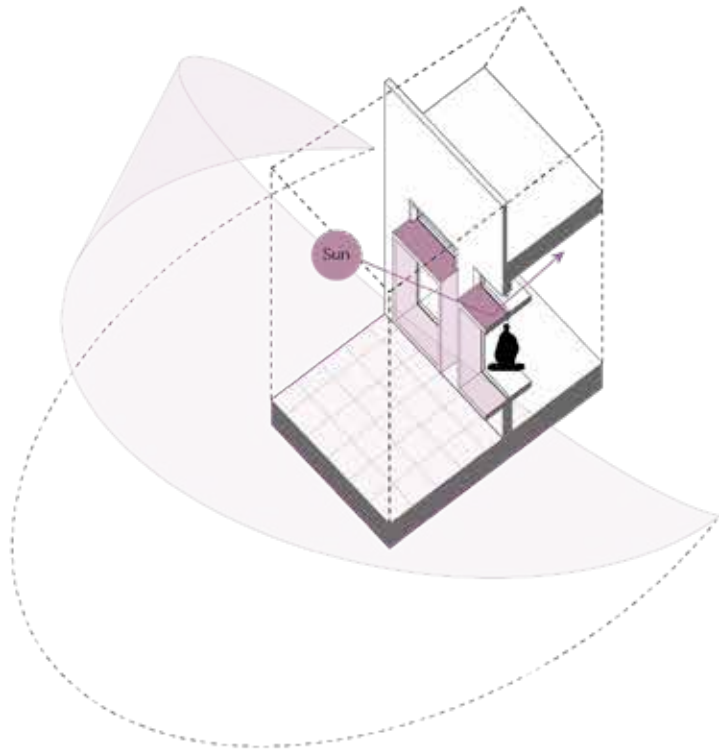
SANA RASTEGAR

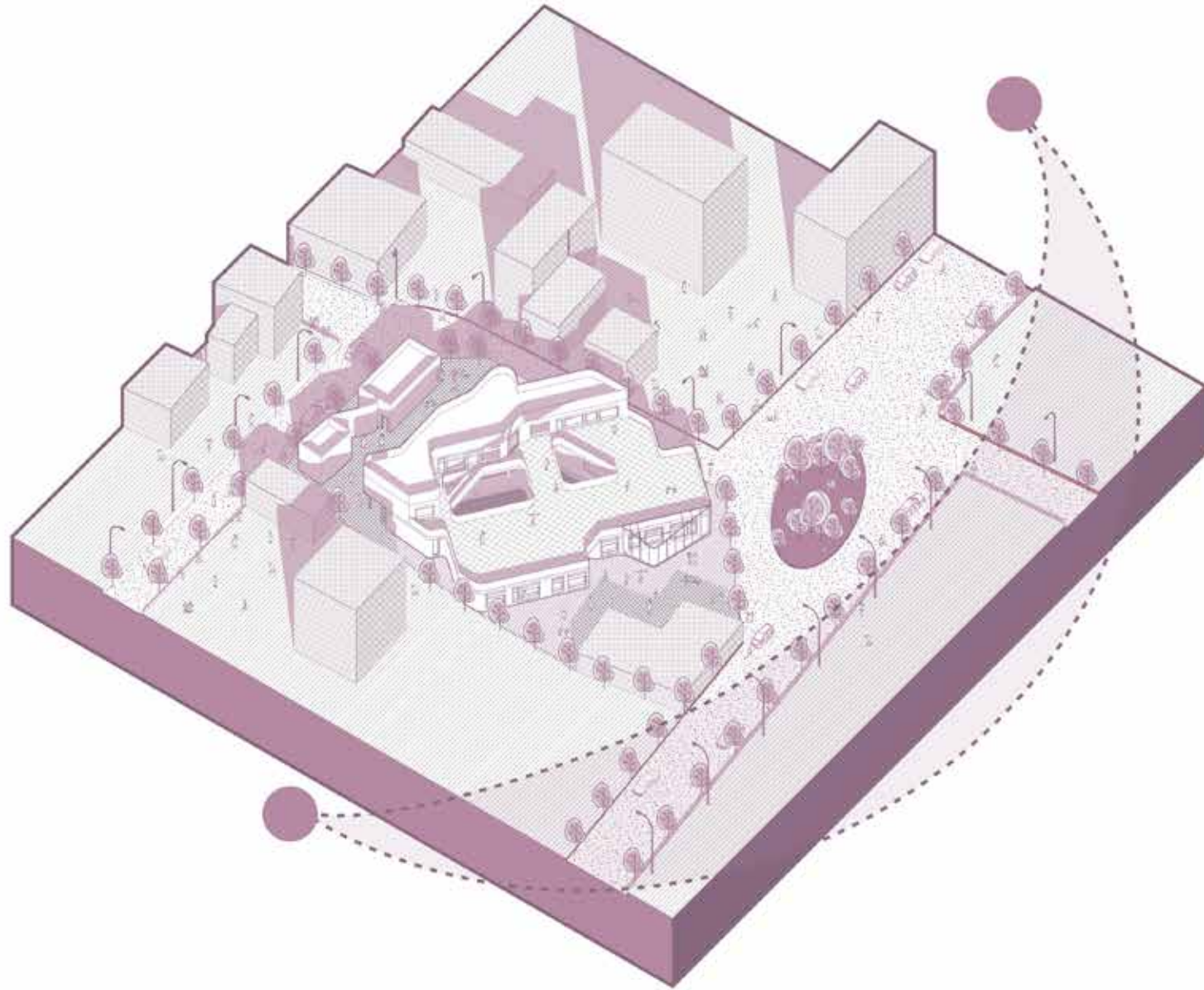


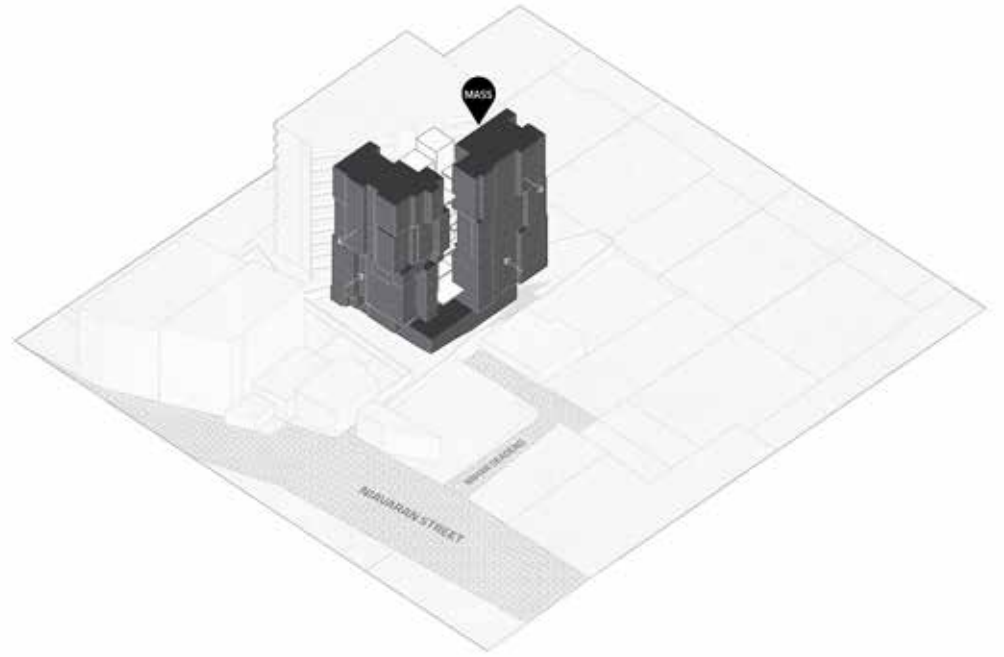
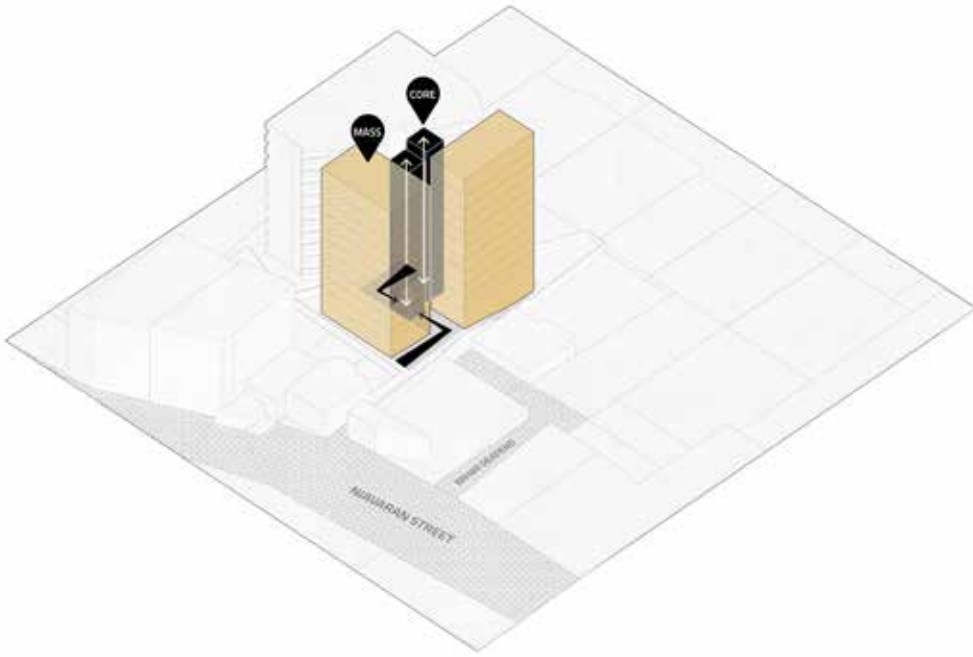
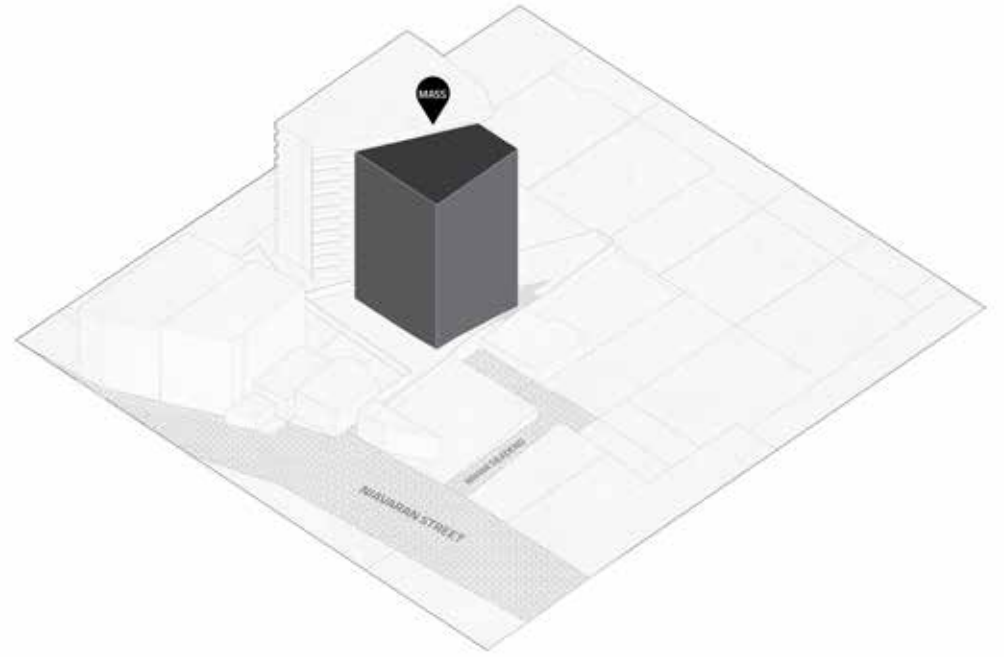
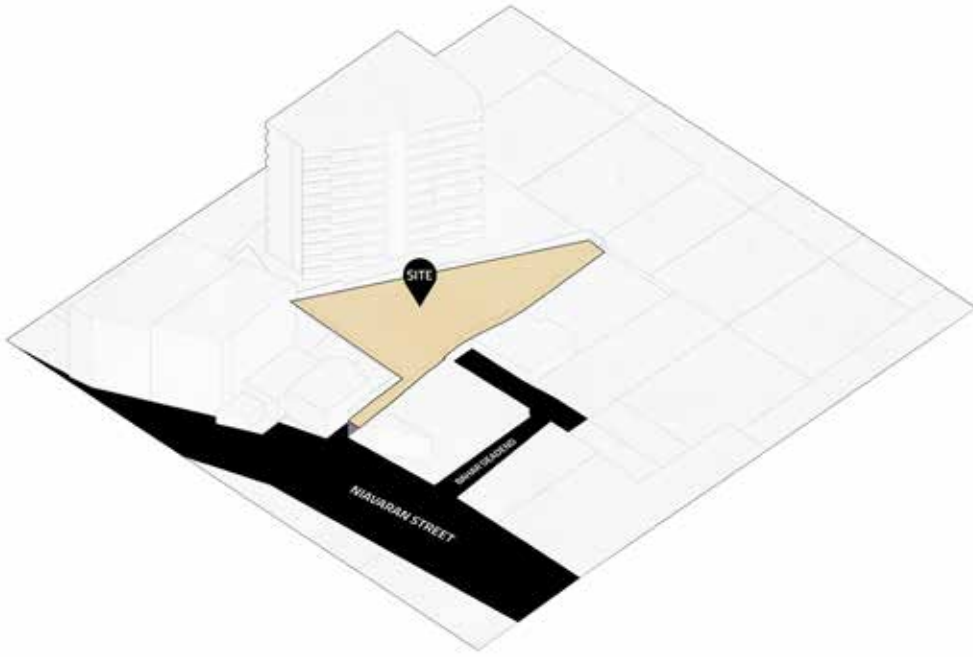


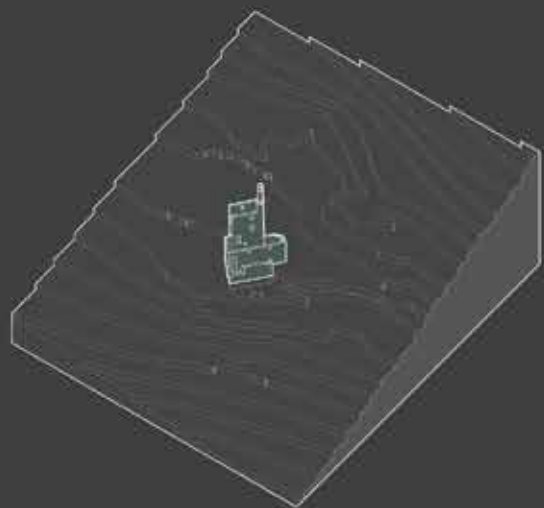




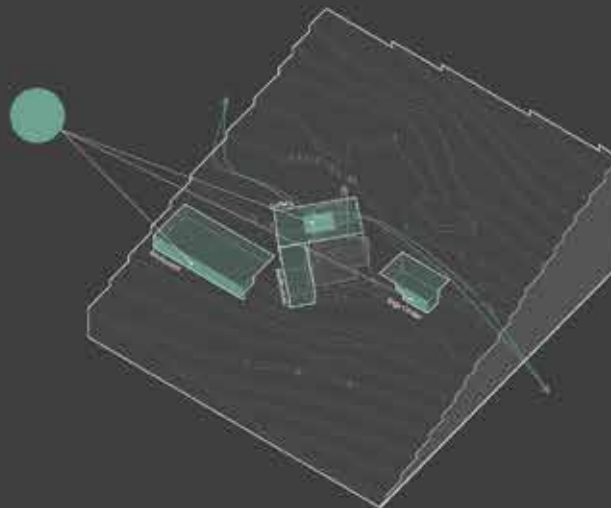




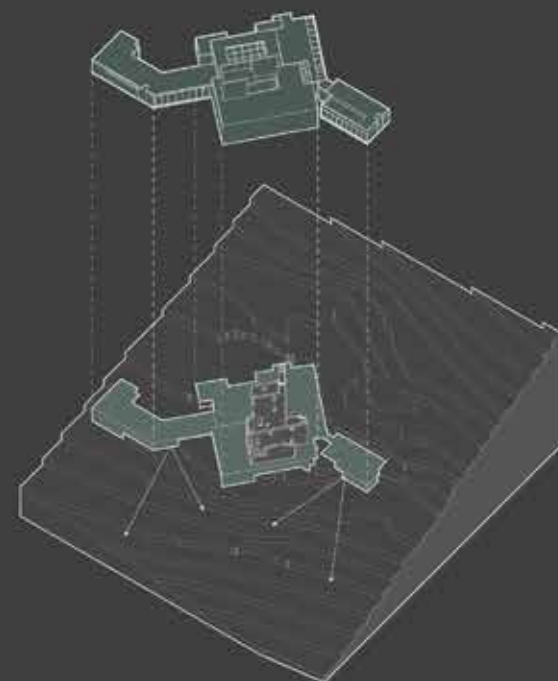




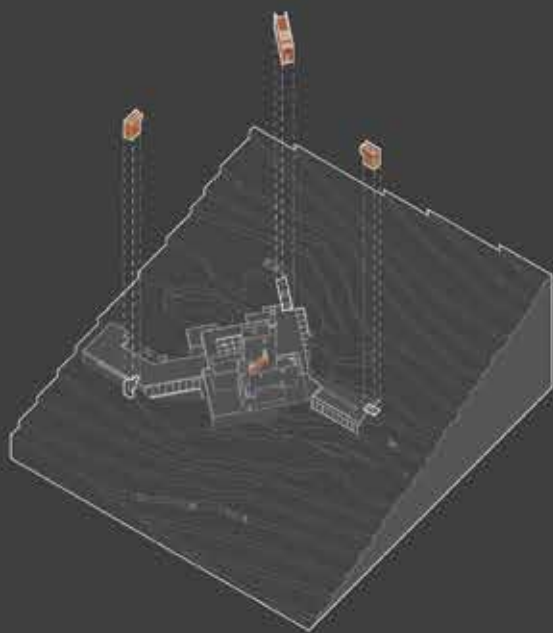
The tower over Allihies copper mine.



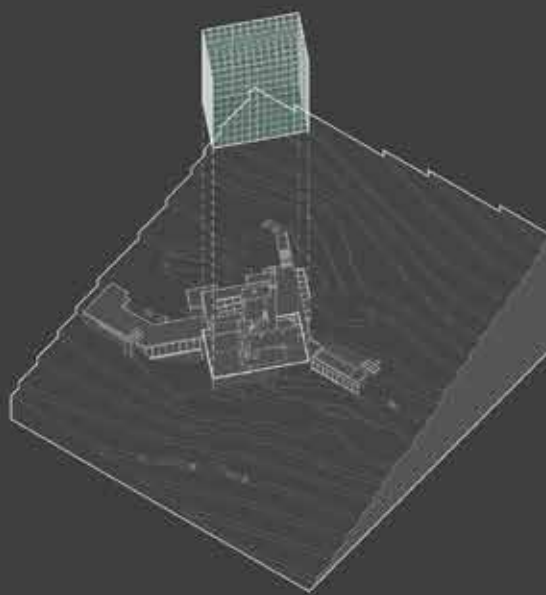
The main spaces of project located underground. The spaces are placed according to the slope of the site in such a way to provide natural light and view to the landscape. Also, the gallery receives light from the ceiling and is located in a place away from the wind.



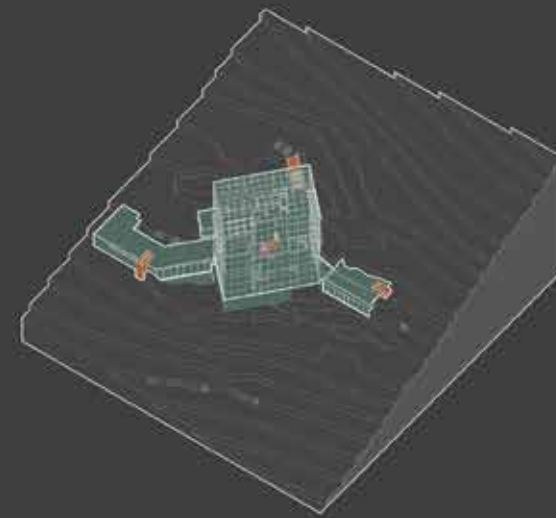
The main volume of the project is located under the tower. The hill has been emptied in such a way that it is possible to see distant landscapes.



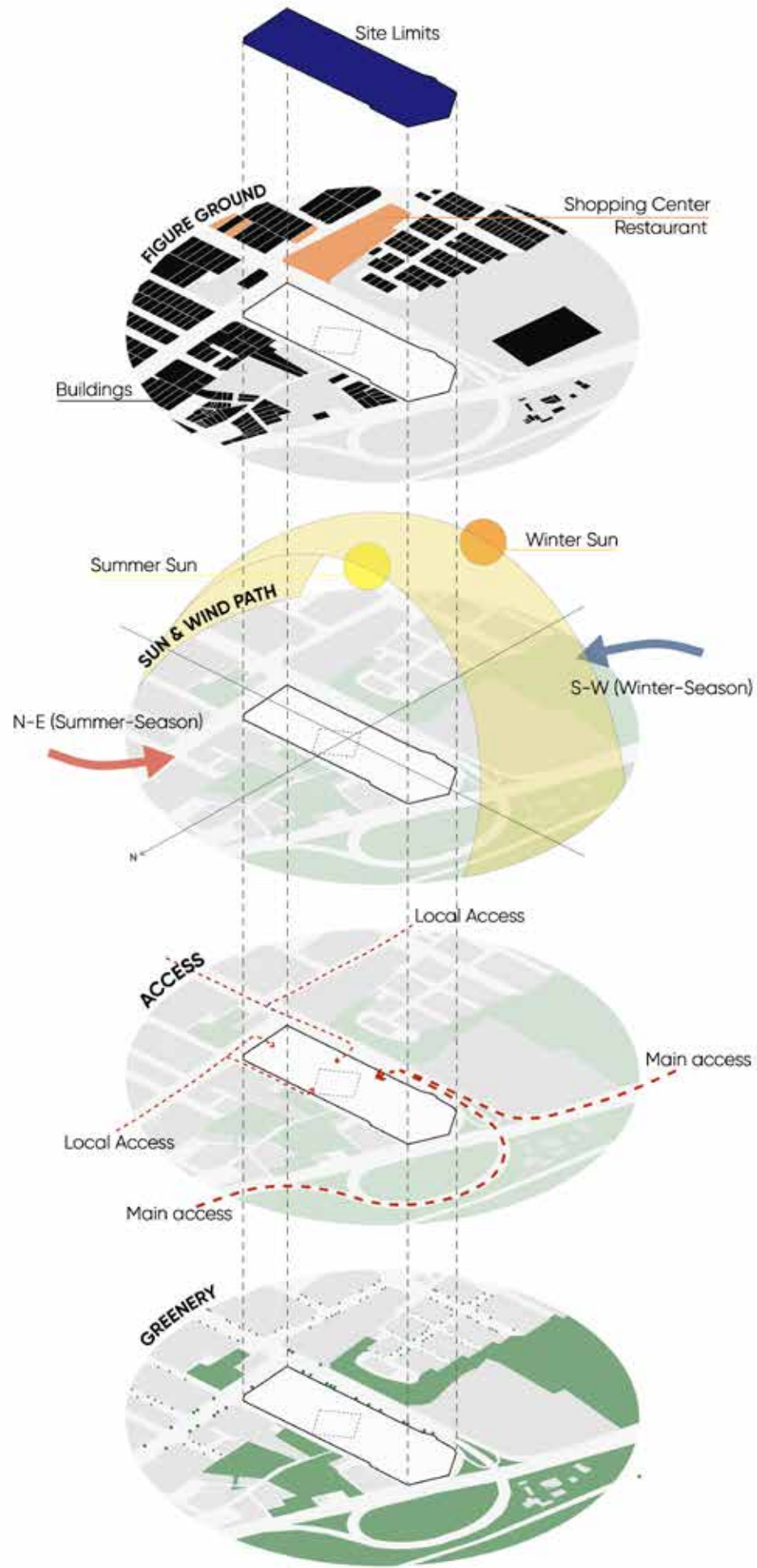
Stairs provide vertical access from the ground level to the spaces below.

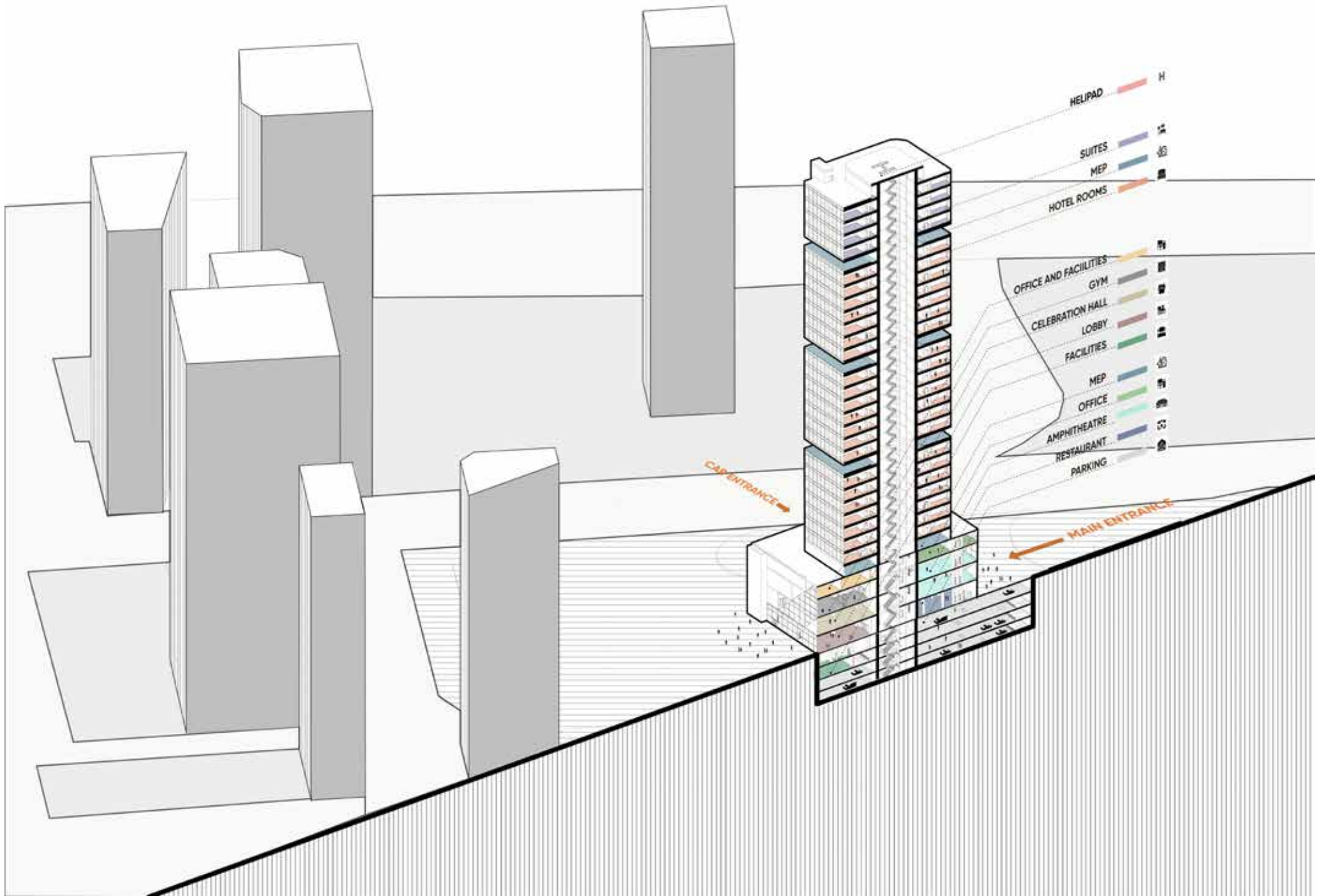


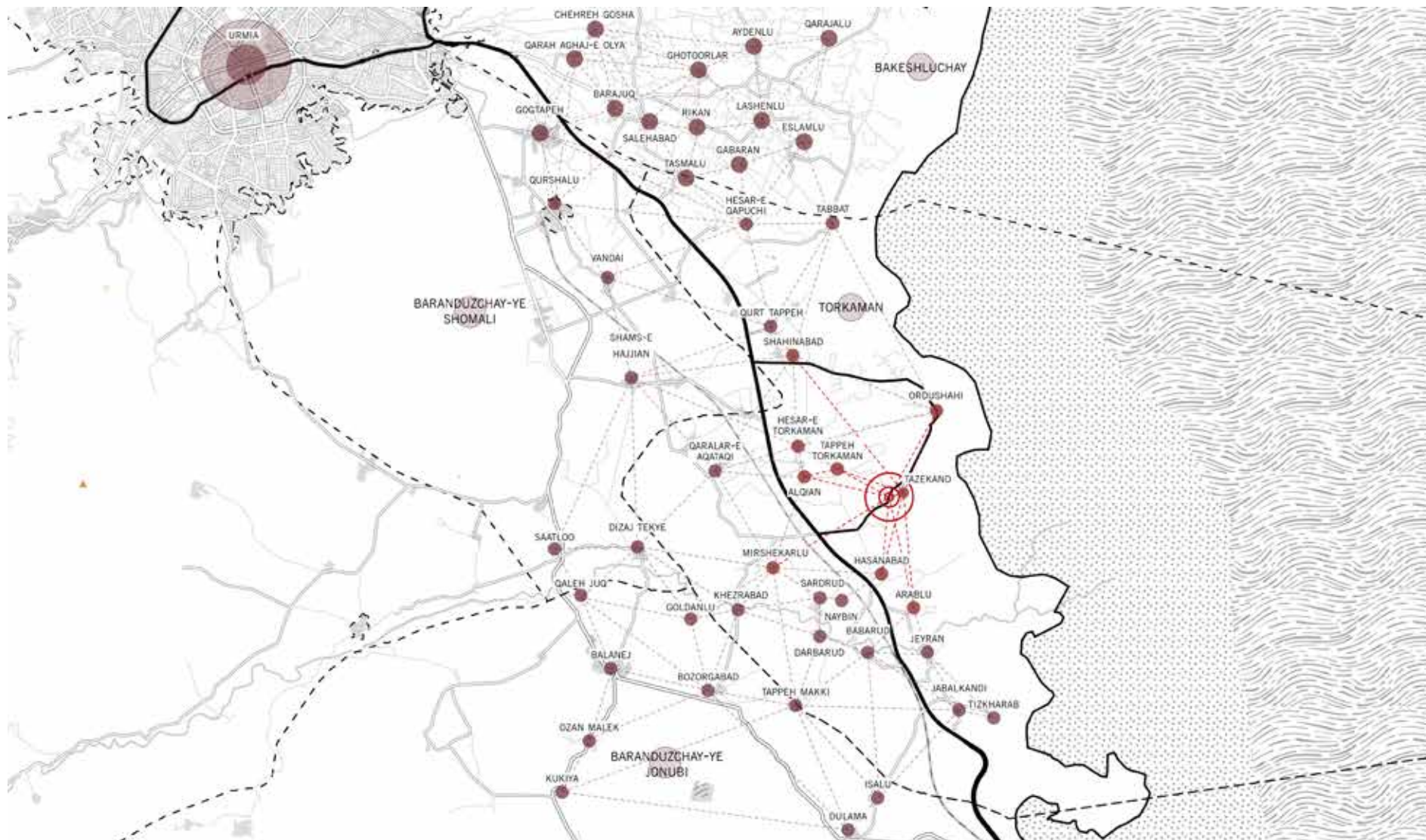
A glass enclosure covers the entire volume of the tower and protects it.

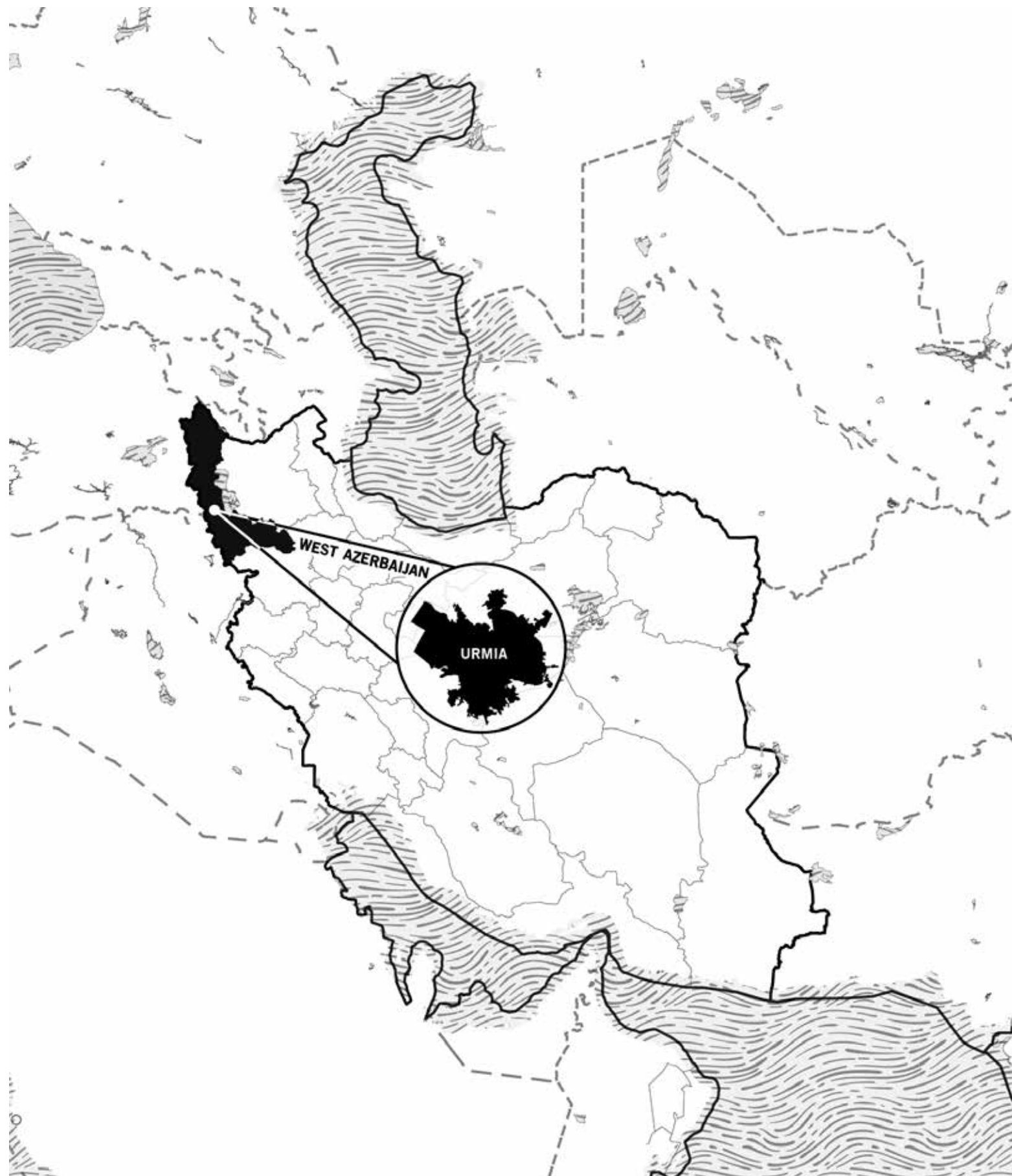


The assembly of elements creates the final form of the project.

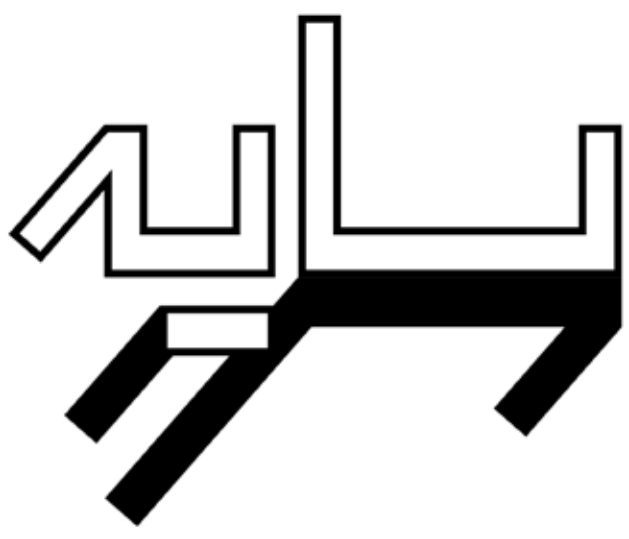


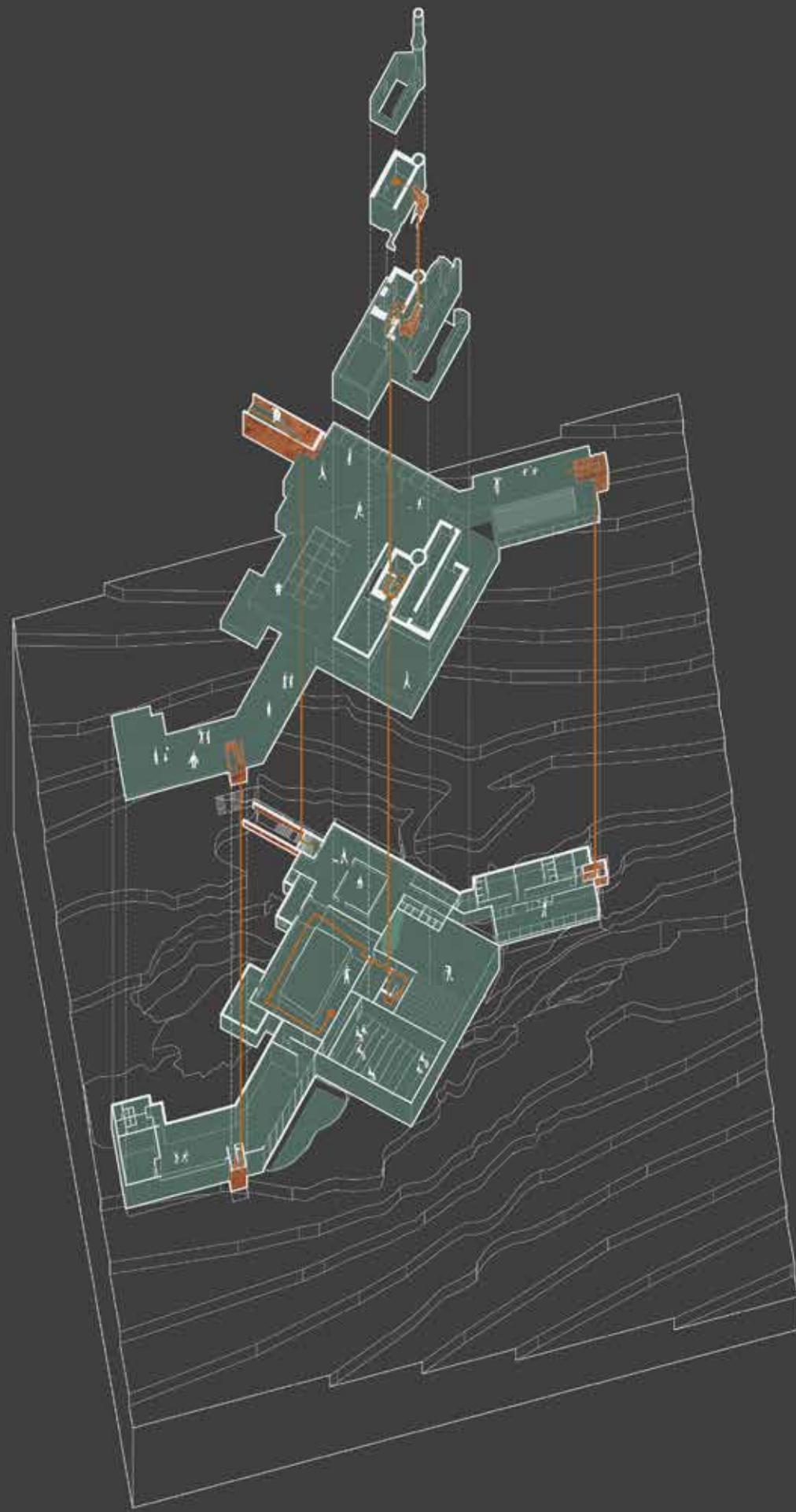


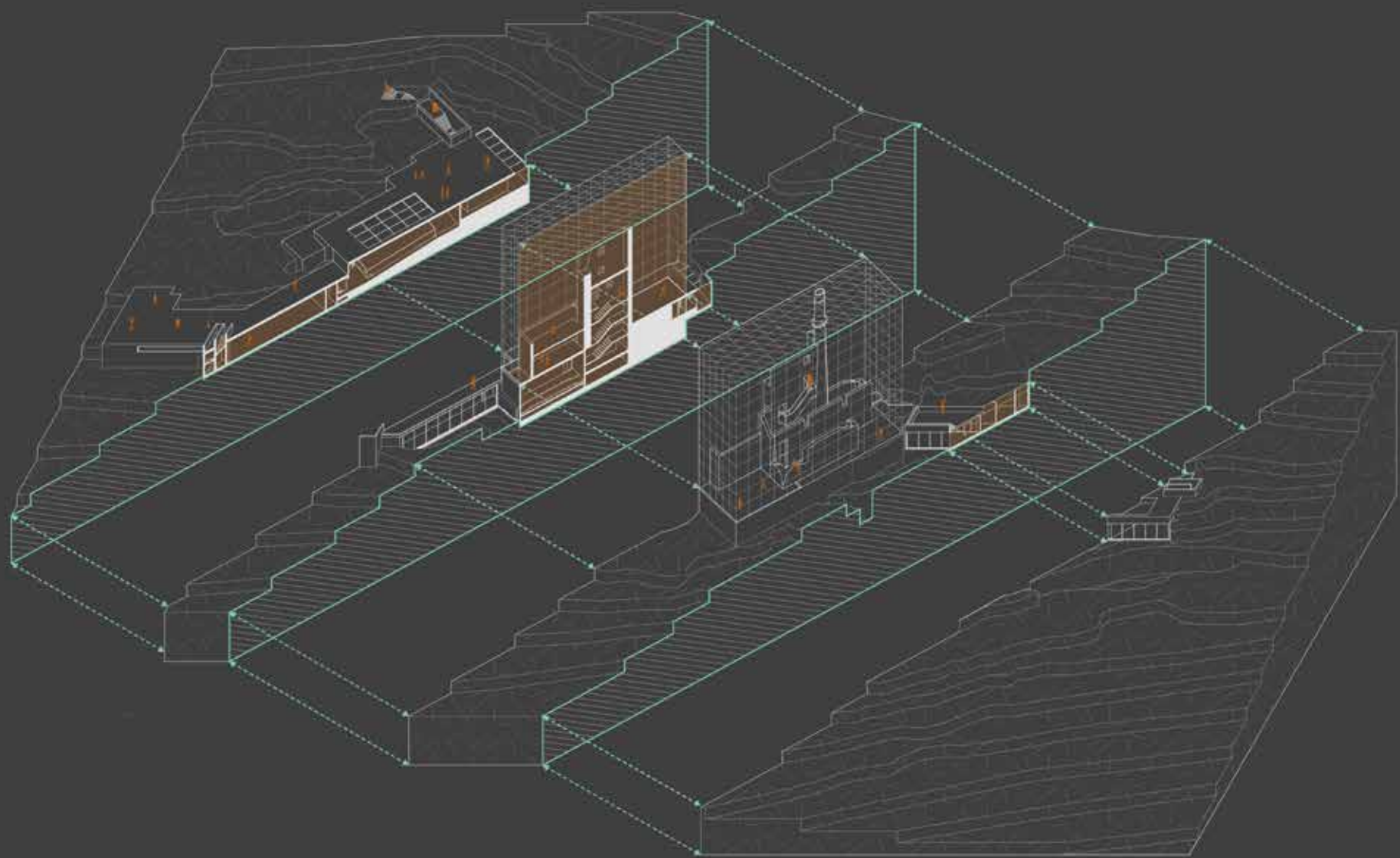


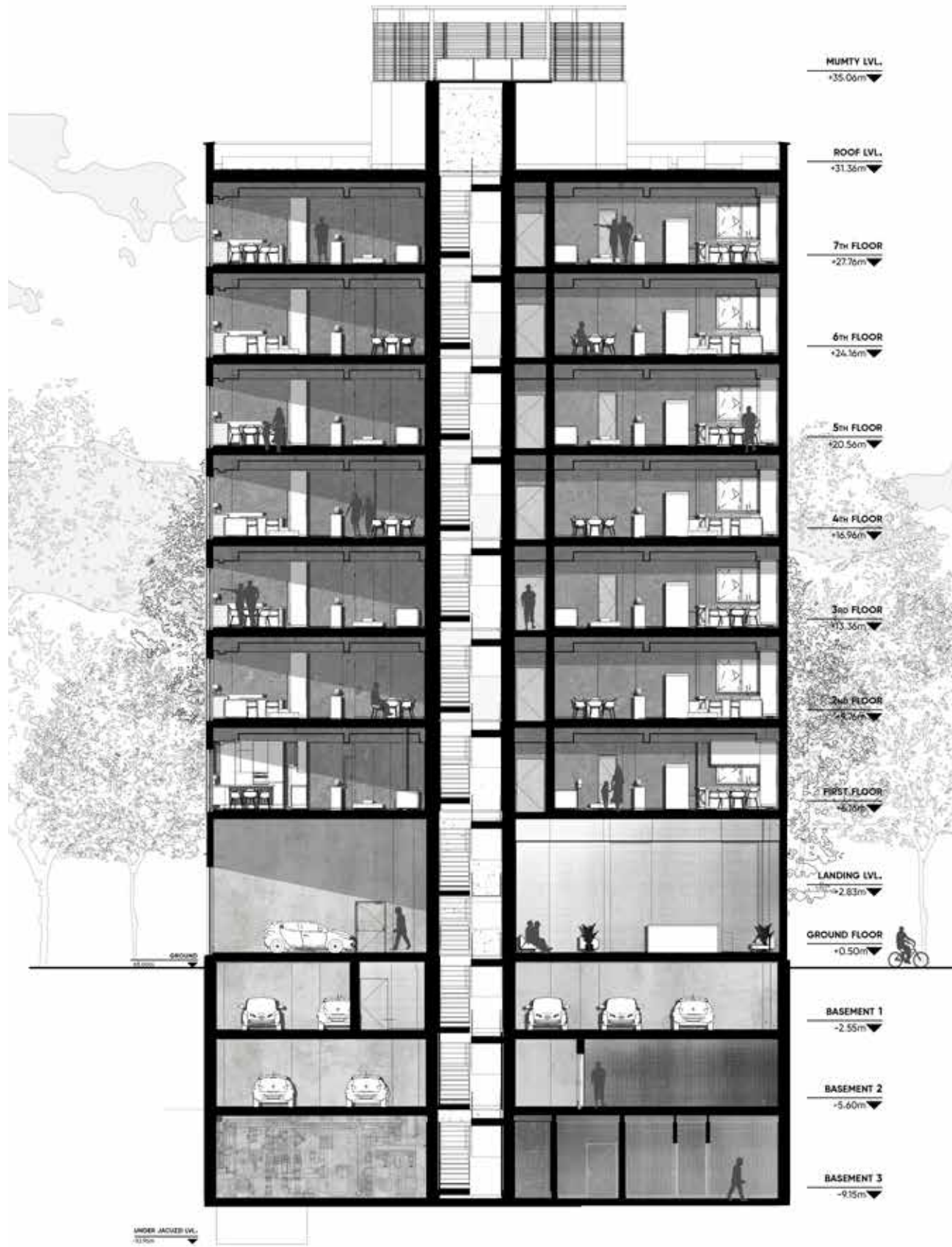


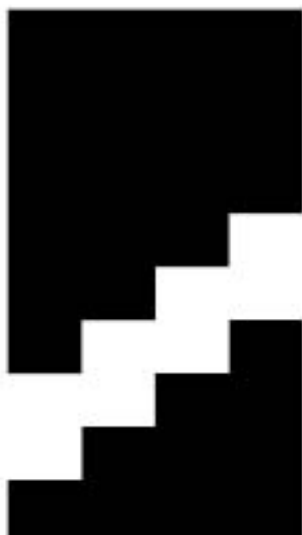




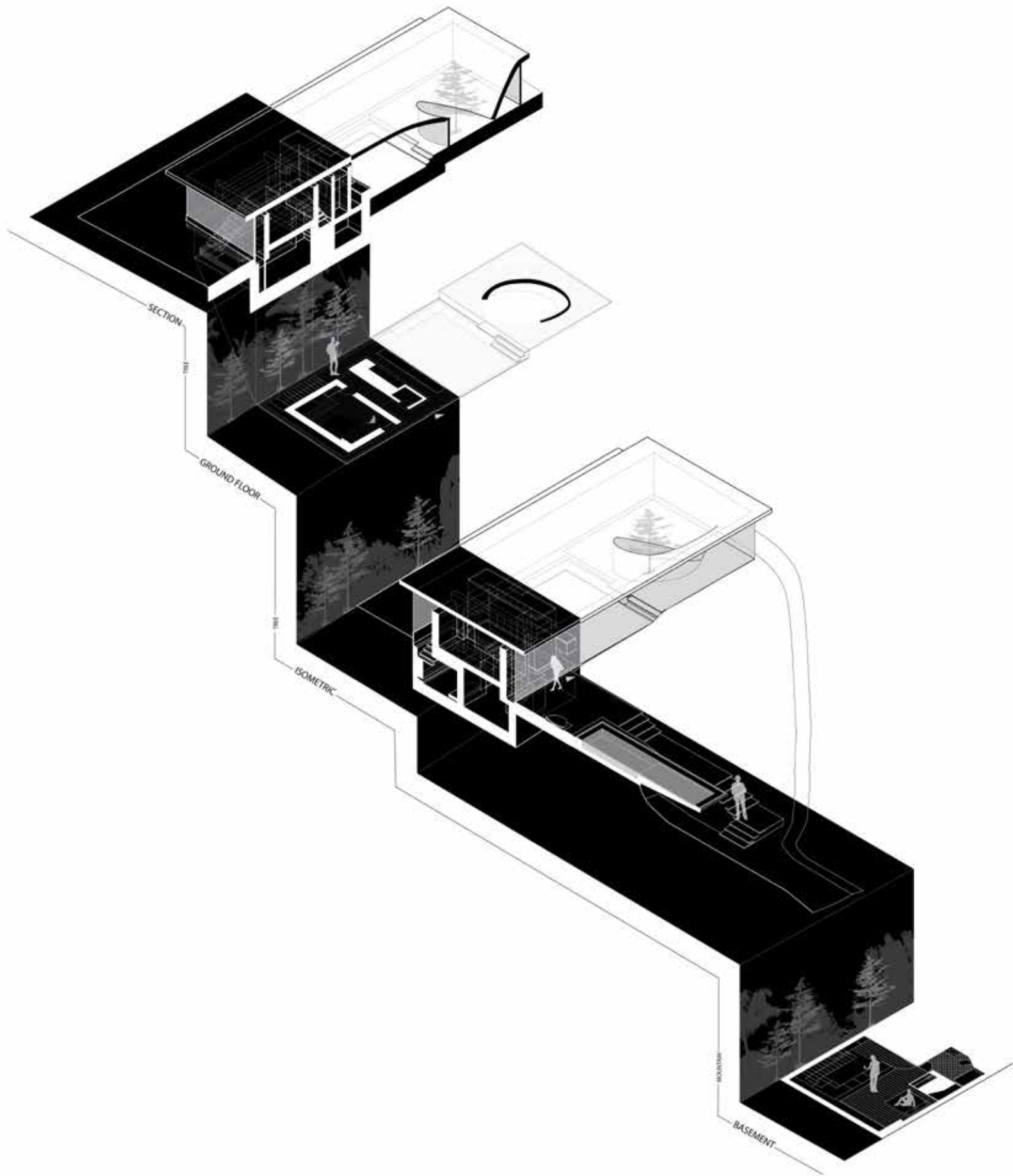


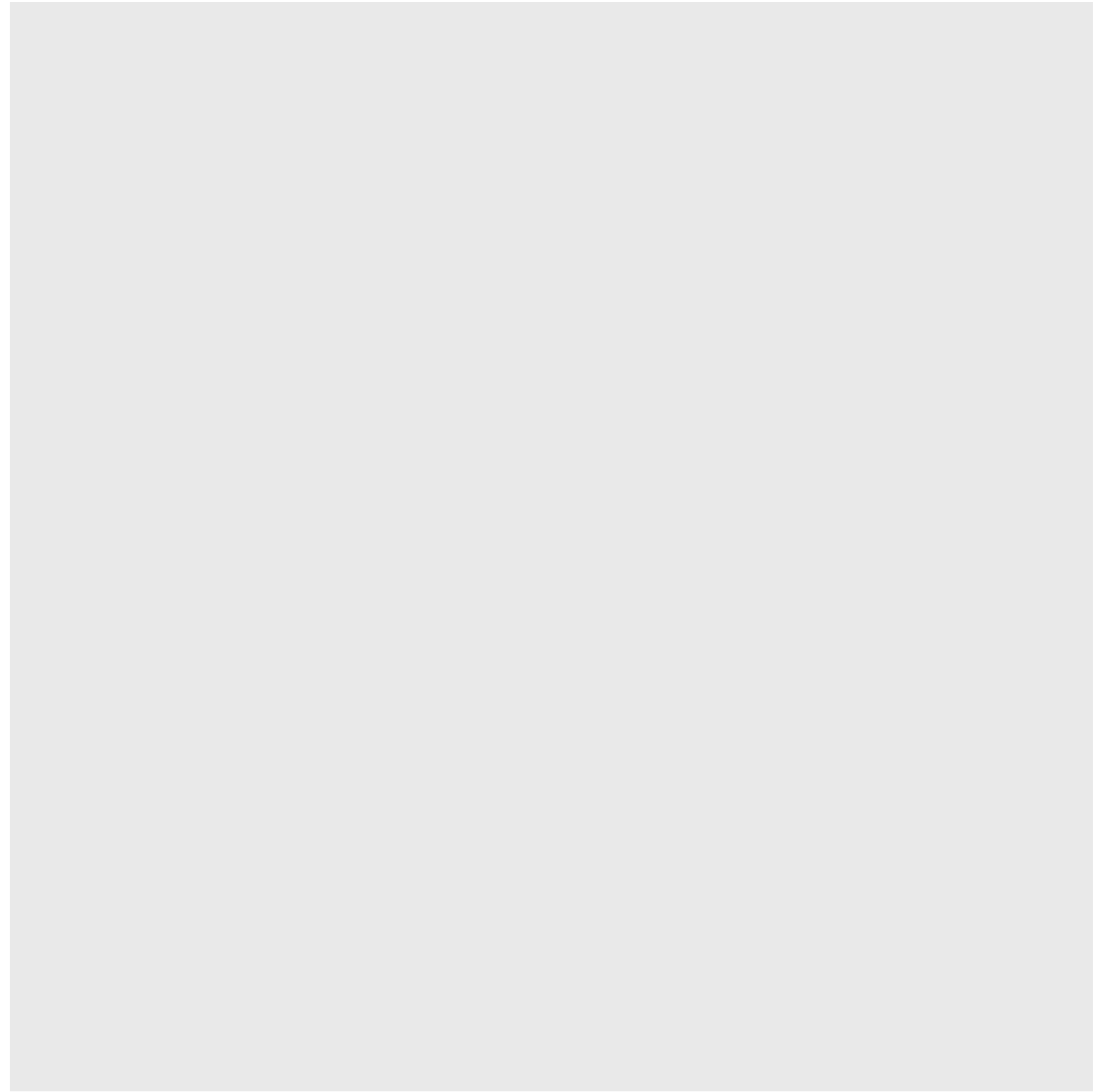












SANA.RAST96@GMAIL.COM